

## HyperLink Wireless 4.9/5.8 GHz 23 dBi Flat Panel Antenna Model: HG4958-23P

### Features

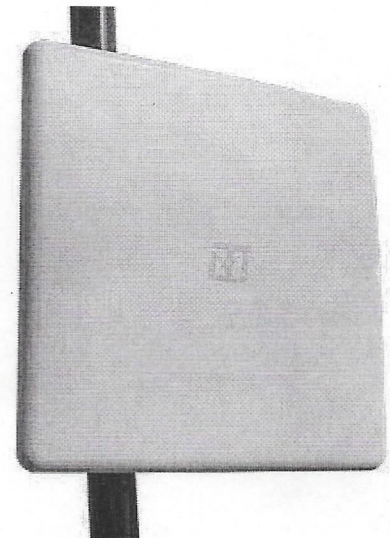
---

- Heavy duty UV-resistant all weather radome
- DC ground lightning protection
- Can be mounted for horizontal or vertical polarization
- N-female connector
- Includes tilt and swivel mast mount

### Applications

---

- 4.9/5.8 GHz Indoor/Outdoor Wireless LAN systems
- Supports IEEE 802.11 a/n applications
- WiMAX, WISP, WiFi Communication
- Homeland Security and Public Safety Band
- Wireless video systems



### Description

---

#### Superior Performance

The Hyperlink HG4958-23P flat panel antenna is designed to operate from 4.9 GHz to 5.8 GHz (4750-5850MHz). The wide band design of this antenna eliminates the need to purchase different antennas for each frequency. This simplifies installations since the same antenna can be used for a wide array of wireless applications.

#### Rugged and Weatherproof

This aesthetically pleasing antenna features a heavy-duty UV-resistant plastic radome ideal for all-weather indoor and outdoor operation. The HG4958-17DP-3NF antenna is supplied with a tilt and swivel mast mount kit. This allows quick installation at various degrees of up/down tilt for easy alignment.

