

ANT-32

# Instruction Sheet

## OD58

ANT. OD5812F  
320.0003

### Omni-directional Antennas

**Step 1:** Loosen the 4 screws on the bracket antenna clamp. Remove nut, (if present) from the Antenna N Connector. Slide antenna into clamp and tighten 4 screws to secure antenna. Top of bracket should be approx. even or below top of antenna metal base.

**Step 2:** Loosen U-Bolt nuts and slip U-Bolts over pole. For best performance mount so fiberglass part of antenna is above end of pole. Position antenna and tighten U-Bolts to 60 in-lbs.

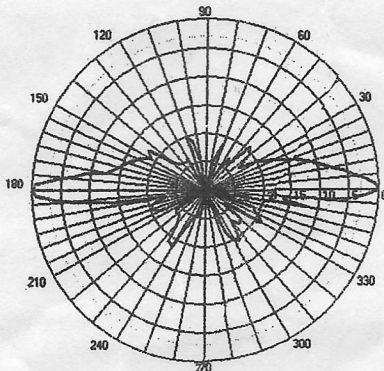
**Note 1:** If antenna needs to be mounted lower on pole, it is best to standoff the antenna from pole a few inches to minimize the effect of the pole on antenna performance.

**Note 2:** The N Connector with nut can be used to mount the antennas to a metal roof or user fabricated bracket if desired. Drill a 5/8" hole in the surface, insert the antenna and secure with provided nut. An optional standoff bracket is available for this type of mounting.

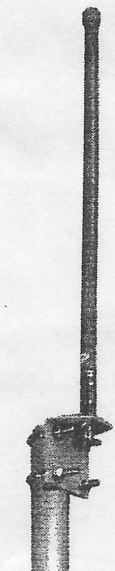
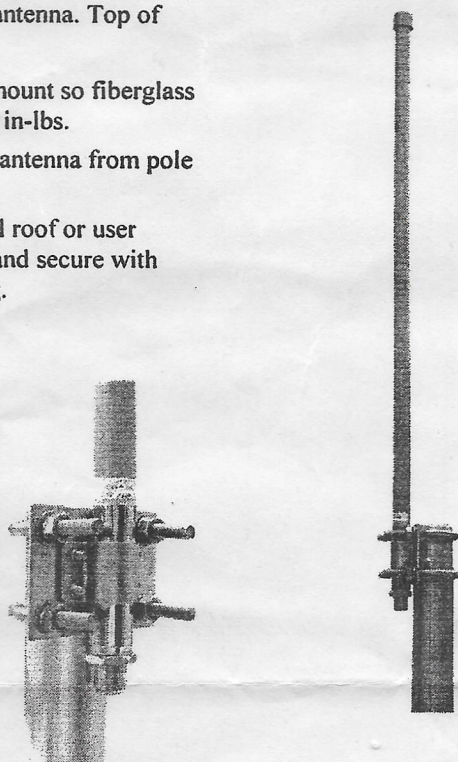
Parameter	OD58	Min	Typ	Max	Units
Frequency Range	OD58	5470		5850	MHz
VSWR			1.5:1		
Impedance			50		OHM
Input Power				100	W
Pole Diameter (OD)		1 25		2 31.8	inch mm
Operating Temp		-40		+60	Deg C

OD58M-12	
Gain	12dBi
Vertical Beam Width	7 deg
Rated Wind Velocity	125mph
Weight	1.1 Lbs
Dimension (L)	21.25"

Wind Loading	
100MPH	8.75 Lbs
125MPH	13.7 Lbs



12dB Vertical Antenna Pattern  
E Plane



Optional Standoff Bracket

35

24 Aug 2006 16:25:44

CH1 S22 SWR

500 m / REF 1.001

1: 1.3848

5 850.000 000 MHz

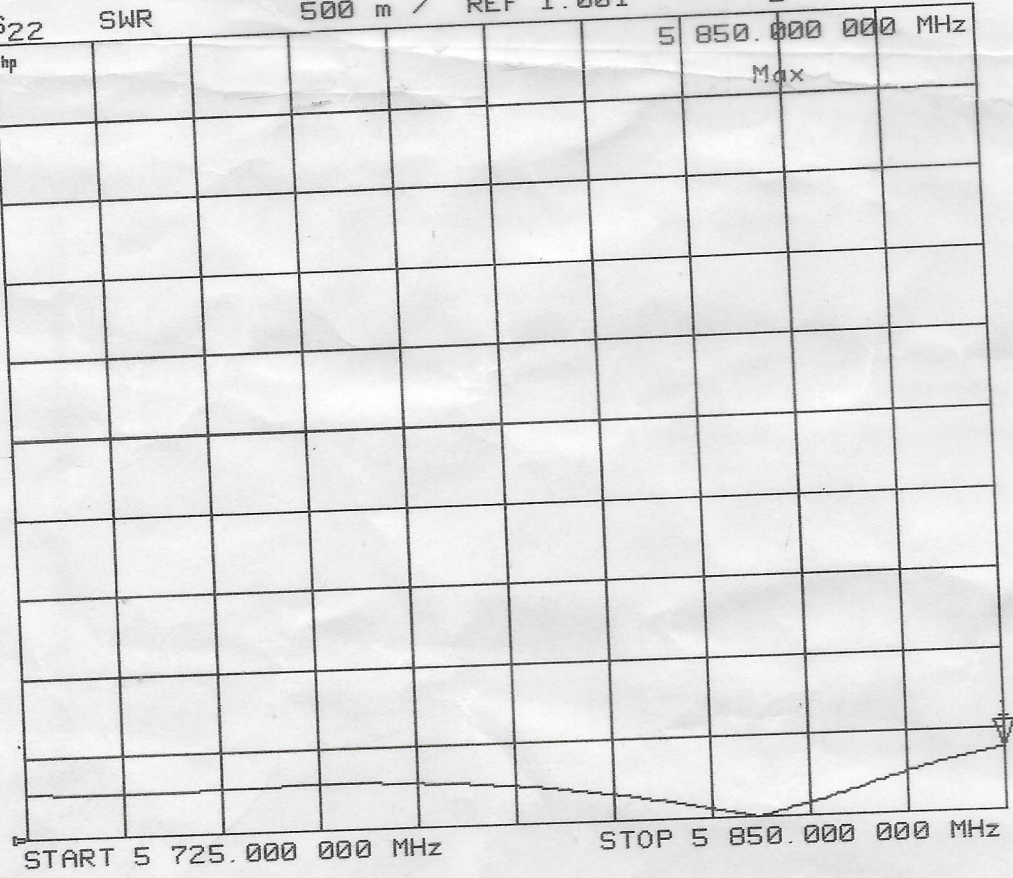
hp

Max

PRm

Cor

↑



START 5 725.000 000 MHz

STOP 5 850.000 000 MHz