



Viper 300-MAP-1

// Description

CDM Wireless, a leader in innovative wireless broadband network solutions, proudly introduces the Viper 300 Mobile Access Point.

Viper 300-MAP is the ideal edge solution for video cameras with large capacity SD card storage in remote areas where all data is stored on the camera SD card and easy data retrieval is needed.

// Simple Installation & Ease of Use

The 300-MAP-1 provides a wireless hotspot connection for fast and easy data retrieval while simplifying deployment of any brand IP camera by providing PoE+ Ethernet for camera power/data.

Viper 300 MAPs can be powered by solar or AC power and have a 2x2 MIMO hotspot receiver with a concealed high-gain front face antenna to provide wireless connection, extended coverage and fast data transfer of recorded video and data from the camera SD card.

Installation is fast and easy with a NEMA-4X enclosure, universal mounting kit, feed-through connectors and a PoE+ port for direct connection to the video camera or other edge IP device.

// Designed for Security Integrators

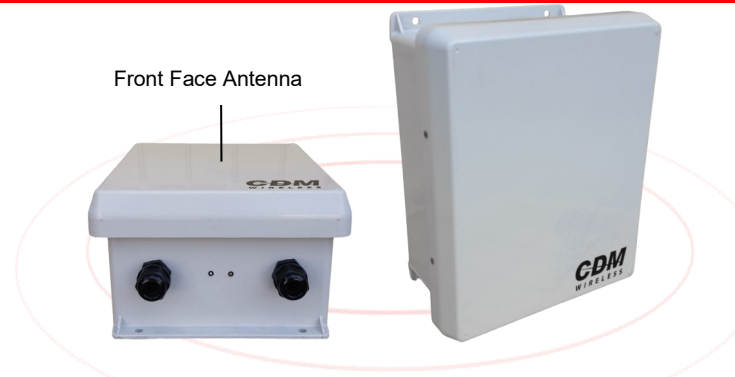
The Viper 300-MAP series are uniquely designed to satisfy the needs of security integrators. They are designed to meet the challenges of designing and deploying surveillance systems in remote stand-alone locations and offer simplicity, no maintenance, and maximum flexibility in camera selection and hotspot connection.

With multiple power options, built-in lightning and ESD protection on power, data, and antenna ports, CDM products are built for rugged environments and proven to withstand the most extreme conditions.

All Viper products include software, licenses, accessories and unlimited bandwidth at no additional charge.

Assisting customer's is our specialty! Each Viper product is pre-programmed to each customer's specific requirements.

At CDM, we deliver complete Plug and Play systems.



Compatible with all industry IP cameras!

// Key Features

- One PoE+ 802.3at power output port
- AC power or DC solar option
- High transfer rate of 230 Mbps¹
- Range of 1,200 ft¹
- 65 W total output for high power IP camera
- Power/Data industrial ESD lightning arrestor
- Frequency 5180 to 5825 MHz²
- Dynamic Frequency Selection
- AES 256 / 3DES encryption for high security
- Gigabit Ethernet ports with Auto-MDI/X
- External LED status lights for power & data
- NEMA 4X rating, UL approved, CE listed
- Includes universal mounting kit and PoE supply
- Windows-based GUI and Web browser interface for simple setup, programming and diagnostics
- 2 year warranty
- Made in USA

¹ Higher/lower rate and range depends on settings and environment

² Frequency operating range limited by Country Regulations

// WIRELESS INTERFACE

Radio:	1 2x2 MIMO receiver
Antenna:	16dBi, 33deg integrated MIMO panel
Data Connect Rate:	300 Mbps
Data Throughput Rate:	230 Mbps ¹
Frequency:	5180 - 5825 MHz ² (Dynamic Freq Selection)
Transmit Power:	500mW (27dBm) EIRP limit ²
Supported Channels:	10/20/40 MHz
Wireless Standards:	802.11a/n (Standard & Proprietary modes)
MAC protocols:	TDMA, CSMA/CA, Polling
Modulation:	OFDM (BPSK, QPSK, 16-QAM, 64-QAM)
Quality of Service:	4 QoS class levels (voice, video, high, low)
Range:	1,200 feet at MCS7 with 3dBi antenna ¹
TX Power / RX Sensitivity:	TX/RX at MCS0 30dBm / -96dBm
	TX/RX at MCS7 26dBm / -75dBm
	TX/RX at 6Mbit 30dBm / -96dBm
	TX/RX at 54Mbit 27dBm / -78dBm

// POWER

Input :	120VAC or 48VDC PoE+ (802.3at) supply
Output:	One 48VDC PoE+ (802.3at) on port 1, 65 Watts max output to powered device
Consumption:	10 Watts plus camera power consumption

// INTERFACES

Ethernet	1 Gigabit Ethernet port with Auto-MDI/X
----------	---

// SYSTEM MANAGEMENT AND CONTROL

Antenna Alignment, Freq Scan, Freq Sniffer, Spectrum Usage, Channel Snooper, TX Power, TX/RX Signal Strength, Signal Quality, Connection Rate, Data Rate, Noise Floor, Signal-to-Noise Ratio, Bandwidth, Ping, Flood Ping, Ping Speed, Netwatch, IP Scan, Traffic Monitor, Email, Packet Sniffer, Torch, System Health, Resource Stats, History, Logging, Scripts, Scheduler, SMS, Watchdog, Graphing, Trace Route, MAC Server.

¹ Higher/lower actual throughput and range depends on environment

² Frequency and operating power range limited by Country Regulations

// AUTHENTICATION, SECURITY AND ENCRYPTION

Authentication:	RADIUS server MAC enabled
Security:	SSL based authentication
Local/Remote Admin:	SSH, IP/MAC Telnet, Win GUI, HTTPS, FTP, Serial Console
Encryption:	AES 128/256, Triple DES with CBC-MAC, RADIUS, EAP
VPN:	EOIP, VLAN, PPOE, PPTP, IP/IP, L2TP
VLAN:	802.1Q / 802.1QinQ / 802.1ad
Protocols:	RTP/IP, UDP/IP, TCP/IP, HTTPS, VRRP, NTP, DNS, DHCP, ARP, WDS
GPS Support:	Asynchronous NMEA0183, NMEA/RTCM or simple text

// ENVIRONMENTAL & ENCLOSURE SPECIFICATIONS

Material:	Fiberglass w/stainless steel hardware
Finish:	UV protective treatment
Rating:	NEMA 4X, IP66
Temperature:	-40C to +70C
Humidity:	0-95% (wind driven rain)
Dimensions:	10" x 8" x 6"
Weight:	6 Lbs.
Connectors:	2 Weatherized feed thru for cables or conduit
LEDs:	Power, Ethernet Activity
Mounting:	Mast, pole or wall
Grounding:	GND terminal lug
Vibration:	IEC 60721-3-4 4M5 Random
Mechanical:	IEC 60721-3-4 4M5
Solar Radiation:	ASTM G53 1000 hours
Ice Load:	25mm radial
Salt Fog:	IEC 68-2-11 Ka 500 hours

Regulations:	CE, FCC Part 15 Class B
--------------	-------------------------

Viper 300-MAP Product Line

CDM Wireless, your trusted wireless broadband solutions provider, proudly introduces our Viper 300 Mobile Access Point solutions.

The Viper 300-MAP product series are uniquely designed to satisfy the needs of security integrators. They are specifically designed for video cameras with large capacity SD card storage and installed in remote areas where all data is stored on the camera SD card and easy data retrieval is needed along with simplicity, no maintenance, and maximum flexibility in installation and configuration.

Input and output power options, material quality and selection of industrial components with lightning and ESD protection are a few of the most important elements of a reliable high-performance product.

The Viper 300-MAP series includes options for AC power or solar input, selection of PoE output ports and are built using the same industrial components which have been field tested and proven in our Viper products for over 15 years.

With the Viper 300-MAP, integrators can choose the best and most appropriate IP camera for each application. Whether the job calls for a PTZ, 4K, multi-sensor, single bullet, or combination of all, CDM products are built on industry standards to connect any brand.

Installation is fast and easy with a NEMA-4X enclosure, universal mounting kit, feed-through connectors and PoE+ port(s) for direct connection to video cameras or other edge IP devices.

All Viper products include software, licenses, accessories, and unlimited bandwidth at no additional charge.

CDM far surpasses the industry competition on performance, quality, factory programming, and assisting customers with design, installation, performance testing and optimization.

At CDM, our customers are our #1 priority !